



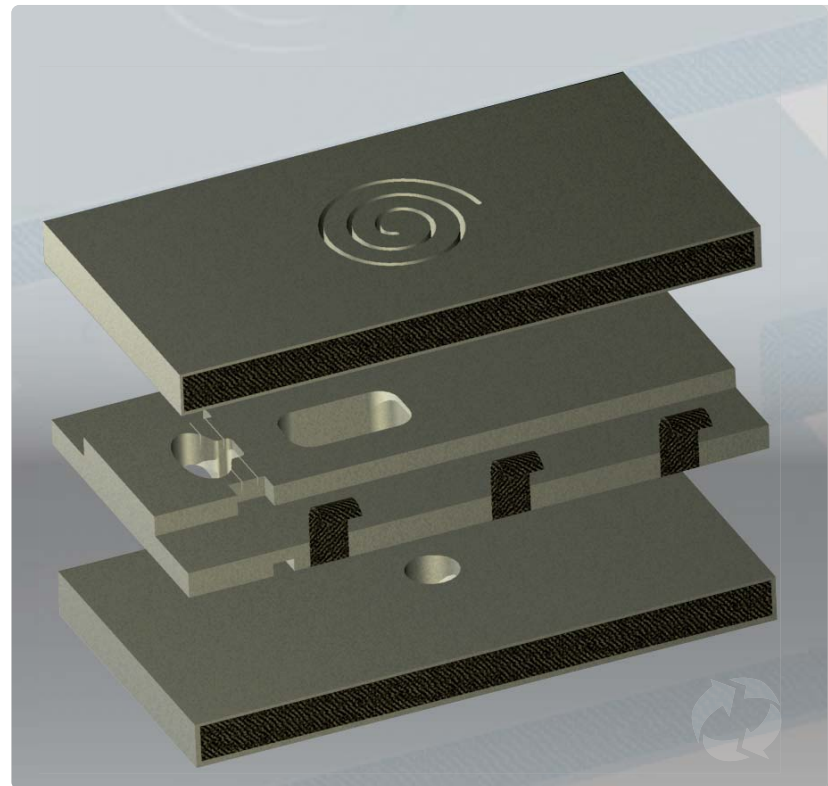
SECURE FLIP

PEDIATRIC DUAL POSITIONER

Spina Bifida is the most common permanently disabling birth defect in the United States.

It occurs when the fetal spine fails to close during the first months of development. Myelomeningocele, the most common type of spina bifida, causes a meningocele (a sac protrusion of the membranes that cover the spine and part of the spinal cord) to protrude from the child's back. Surgery is required to treat many types of spina bifida, usually within days of birth.

The Secure Flip Pediatric Dual Positioner was designed for use during spina bifida procedures to insure infants are flipped from supine to prone positions safely and securely, while protecting the exposed sac. Infants must be in the supine position for intubation, and then flipped prone to perform the surgery, and then back to supine to extubate.



BENEFITS

- Reduces amount of time infant is under anesthesia
- Allows for safe intubation and extubation
- Protects exposed sac while child is in the supine position
- Provides a safe way for flipping the infant from supine to the prone position

INVENTORS

A collaborative team from St. John's Health System.

Sami Khoshyomn, MD

Pediatric Neurosurgeon

Bharat Shah, MD, FACS

Plastic and Reconstructive Surgeon

Dawn Zablocki, MD

Anesthesiologist

SECURE FLIP

PEDIATRIC DUAL POSITIONER

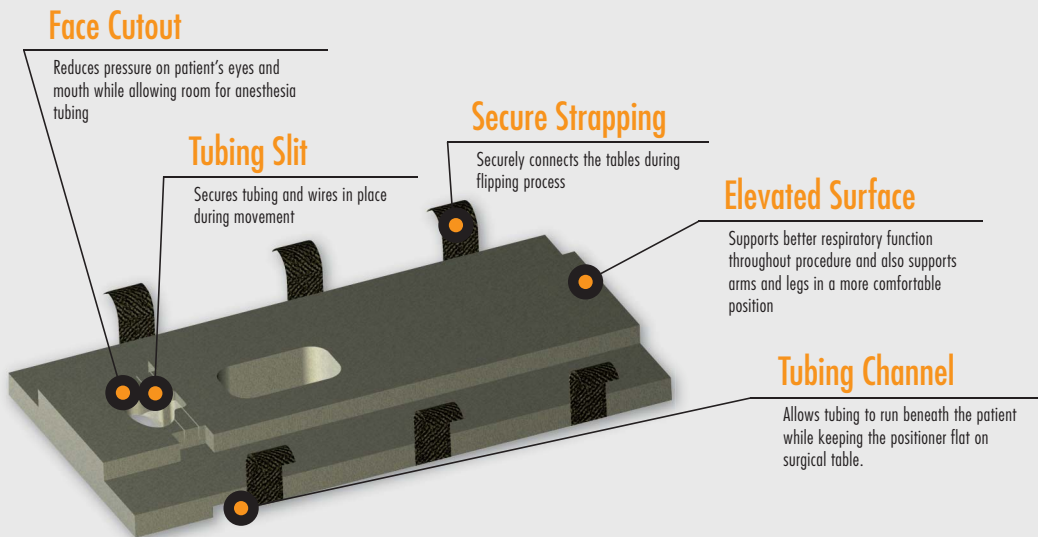


Removable Spiral

Spiral size can be adjusted to allow space for protecting the injured area.

INTUBATION TABLE

Allows the anesthesiologist to intubate the infant in the supine position while not placing pressure on the protrusion.



Face Cutout

Reduces pressure on patient's eyes and mouth while allowing room for anesthesia tubing

Tubing Slit

Secures tubing and wires in place during movement

Secure Strapping

Securely connects the tables during flipping process

Elevated Surface

Supports better respiratory function throughout procedure and also supports arms and legs in a more comfortable position

Tubing Channel

Allows tubing to run beneath the patient while keeping the positioner flat on surgical table.

SURGERY TABLE

Secures to the Intubation Table and holds the infant while being flipped from supine to the prone position for surgery.

RECOVERY TABLE

Allows the infant to be flipped back to the supine position after surgery, while protecting the surgical site.



Surgical Site Cutout

Reduces pressure on surgical site after the procedure

CONTACT

Matt Price Commercialization Manager
St. John's Medical Research Institute
417.865.3157 x502
MattPrice@MercyRnD.com

a product of
RD MERCY
RESEARCH & DEVELOPMENT ST. JOHN'S
MEDICAL RESEARCH INSTITUTE